

BELT TRACKING - SANDING BELT TRACKING IS DONE WITH TRACKING KNOB (#20) ON YOKE ASSEMBLY. TIGHTENING KNOB (#20) RAISES IDLER SPINDLE (#34) AND THE BELT MOVES TOWARD THE MOTOR. LOOSENING TRACKING KNOB (#20) DROPS IDLER SPINDLE AND THE SANDING BELT MOVES AWAY FROM THE MOTOR. WHEN BELT IS CENTERED ON PLATEN (#6) TIGHTEN JAM NUT ON TRACKING KNOB (#20) TO LOCK IN BELT POSITION.

IF YOUR SANDER IS NOT TRACKING, POSSIBLE CAUSES COULD BE...

- DRIVE PULLEY LOST ITS CROWN (CURVATURE OF PULLEY).
- SANDING BELTS ARE NOT SPLICED SQUARE.
- UPPER PULLEY ASSEMBLY NOT SQUARED TO PLATEN.
- (USE CARRIAGE BOLTS (#13) TO SQUARE YOKE WITH PLATEN.)

SANDING HEAD POSITION - SANDING HEAD CAN BE POSITIONED FROM VERTICAL TO HORIZONTAL WITH ANY ANGLE IN BETWEEN. LOOSEN 5/16" (#8) SOCKET HEAD CAP SCREWS LOCATED IN BASE (#4) WHILE HOLDING SANDING HEAD FIRMLY. SANDING HEAD/FRAME (#26) IS LOCKED IN POSITION BY SQUEEZING BEARING HOUSING ASSEMBLY (#28) AGAINST BASE (#4). WHEN DESIRED POSITION IS REACHED, TIGHTEN 5/16" CAP SCREWS TO LOCK IN SANDING HEAD.

PLATEN - LOCATED BEHIND SANDING BELT IS REVERSIBLE.

NORMAL WEAR WILL OCCUR AND PLATEN WILL NEED TO BE ROTATED OCCASIONALLY DEPENDING ON USAGE. REMOVE SANDING BELT, REMOVE PLATEN SCREWS (#7) AND ROTATE PLATE TO NEW POSITION.

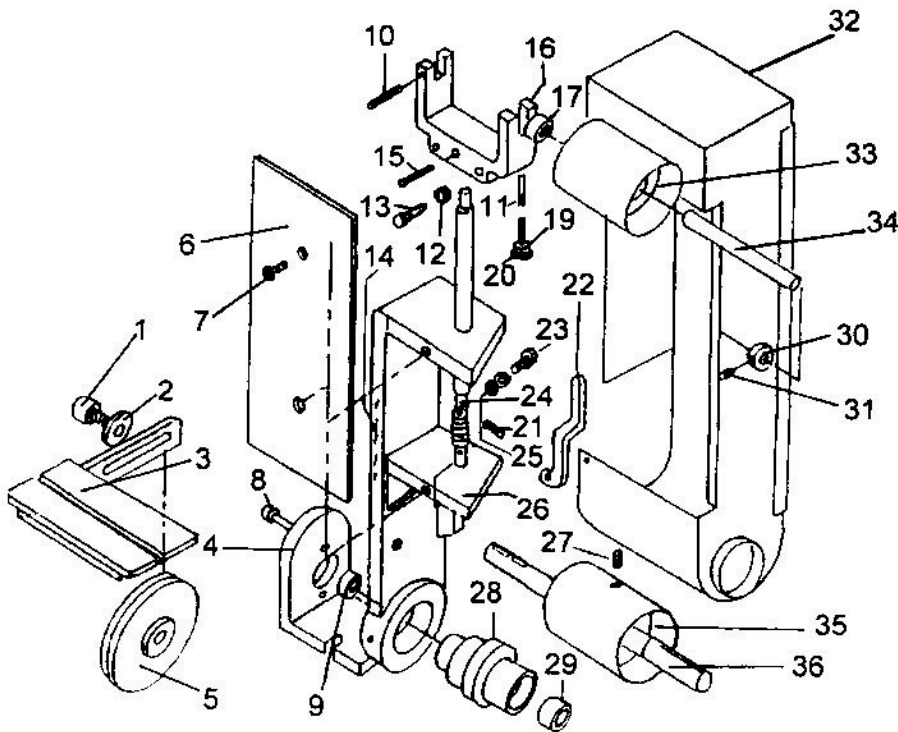
NOTE: CONTINUOUS SANDING ON THE SAME AREA OF PLATEN WILL RESULT IN PREMATURE BELT BREAKAGE. MOVE WORK PIECE TO DIFFERENT AREAS OF PLATEN TO EXTEND PLATEN AND BELT LIFE.

WORK TABLE - (#3) WORKTABLE HAS KEYWAY FOR FIXTURE OR MITRE GAGE LOCATION. ALSO TWO MOUNTING HOLES ARE PROVIDED ON SIDE OF FRAME (#26) TO MOVE TABLE TO DIFFERENT WORK HEIGHTS FOR LONGER BELT OR PLATEN LIFE.

NOTE: KEEP WORKTABLE WITHIN 1/8" OF SANDING BELT.

S6 Sander head (S612)

BELT SANDER PARTS DIAGRAM



| No. | Part No. | Description | QTY |
|-----|------------|---------------------------------------------|-----|
| 1 | | 1/2-13x1-1/2 S.H.C.S | 1 |
| 2 | | 1/2" Washer | 1 |
| 3 | 829-012 | Work Table | 1 |
| 4 | 050-025 | S6MW/S660MW Base | 1 |
| 5 | 560-051 | Spindle Pulley | 1 |
| | 049-019 | Spindle Bushing (Not Shown) | 1 |
| 6 | 563-002 | Reversible Platen | 1 |
| 7 | | 5/16-18x1F.H.S.C.S | |
| 8 | | 5/16-18x1-1/4 S.H.C.S | |
| 9 | 044-007 | K10 Bearing | 1 |
| 10 | | 3/16x2 Roll Pin | 1 |
| 11 | 562-018 | Pin | 1 |
| 12 | | Nut | 1 |
| 13 | | 1/4-20x2 Carriage Bolt | 2 |
| 14 | | Serial Number | 1 |
| 15 | | 3/16x2 Roll Pin | 1 |
| 16 | 960-006 | Yoke | 1 |
| 17 | 044-001 | Bearings | 2 |
| 19 | | Locking Nut | 1 |
| 20 | 441-014 | Knob | 1 |
| 21 | | 3/16x2 Roll Pin | 1 |
| 22 | 455-003 | Tension Lever | 1 |
| 23 | | Bolt | 1 |
| 24 | 700-004 | Shaft | 1 |
| 25 | 697-024 | Tension Spring | 1 |
| 26 | 291-004 | Frame | 1 |
| 27 | | 1/4-20x3/4 S.S.S | 1 |
| 28 | 386-013 | Bearing Housing | 1 |
| 29 | 044-001 | Bearing | 1 |
| 30 | 123-016 | Locking Collars | 2 |
| 31 | | Set Screw | 1 |
| 32 | 342-069 | OSHA Guard | 1 |
| 33 | 560-016TPA | Idler Pulley Assembly | 1 |
| 34 | | Idler Spindle (Sold only with idler pulley) | 1 |
| 35 | 560-015 | Drive Pulley | 1 |
| 36 | 701-025 | Drive Spindle | 1 |
| | 960-006YA | Yoke Assembly (optional) | 1 |