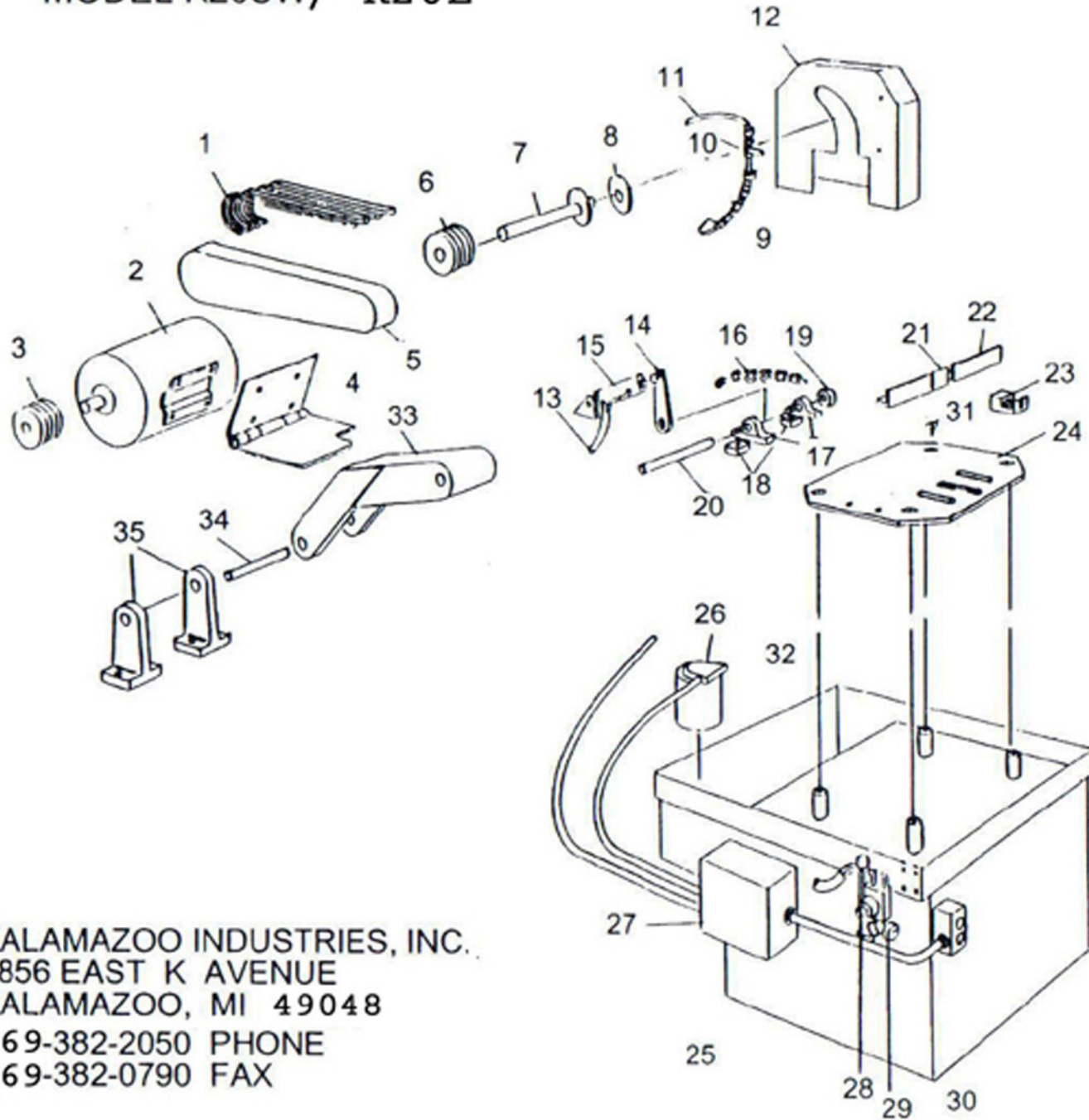


MODEL K20SW/ K20E



KALAMAZOO INDUSTRIES, INC.
 6856 EAST K AVENUE
 KALAMAZOO, MI 49048
 269-382-2050 PHONE
 269-382-0790 FAX

No.	Part No.	Description	QTY
1	051-005	V-Belt	4
2	486-020	15Hp SD Motor	1
	486-009	20Hp SD Motor	1
3	560-067	Motor Pulley 15Hp (Bushing Sold Separately)	1
	560-021	Motor Pulley 20Hp (Bushing Sold Separately)	1
4	486-010	Motor Mount	1
5	342-039	Belt Guard	1
	342-039A	Inner Belt Guard	1
6	560-020	Spindle Pulley 15Hp (Bushing Sold Separately)	1
	560-022	Spindle Pulley 20Hp (Bushing Sold Separately)	1
7	701-010	Spindle W/Tight Flange	1
8	292-011	Loose Flange	1
	537-027	Spindle Nut	1
9	8450-12	Flexible Hose W/Nozzle	1
10	131-035	Coolant Ball Valve	1
11	1000-55	Coolant Hose (assy. sold w/ 9 & 10)	1
12	342-013	Wheel Guard	1
13		Air Line	2
14	002-015	Arm Pivot	1
15	131-007	Cylinder for chain vise	1
16		24" Long Chain	1
17		Pillow Block Bearings(sold with 18)	
18	041-067	Sace, Pillow Block with Bearings	2
19	560-036	Pulley, For Chain	1
20	700-015	Shaft, For Chain	1
21	293-013	Fence L.H	1
22	293-014	Fence R.H	1
23	053-011	Block, Chain Anchor	1
24	556-037	Top Plate	1
25	716-019W	Stand Assembly	1
26	716-011	Coolant Package	1
27		Magnetic Switch	1
28	912-014	4-Way Valve	1
29	912-006	Air Gage & Regulator	1
30		Push Button Switch	1
31		1/2 x 13 x 1-5/8 FHSS	4
32		Coolant Pan	1
33	002-005	Saw Arm	1
34	700-002	Trunnion Pin	1
35	831-002	Trunnion Set, Left and Right	2
	131-006	Cylinder for Power Down Feed	1
	049-017	Motor Bushing 20Hp	1
	049-018	Spindle Bushing 20Hp	1
	049-003	Motor Bushing 15Hp	1
	049-004	Spindle Bushing 15Hp	1
	044-038	oscillation bearings (not shown)	2